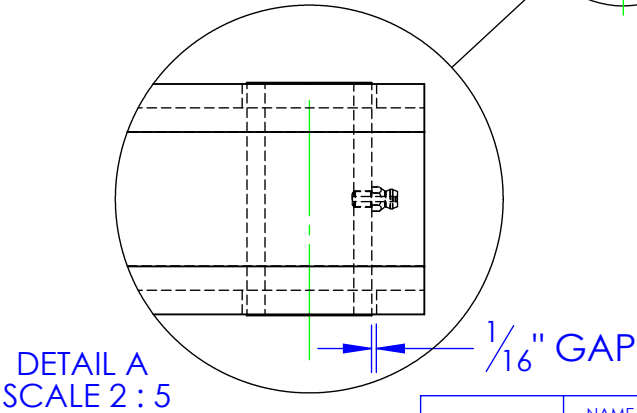
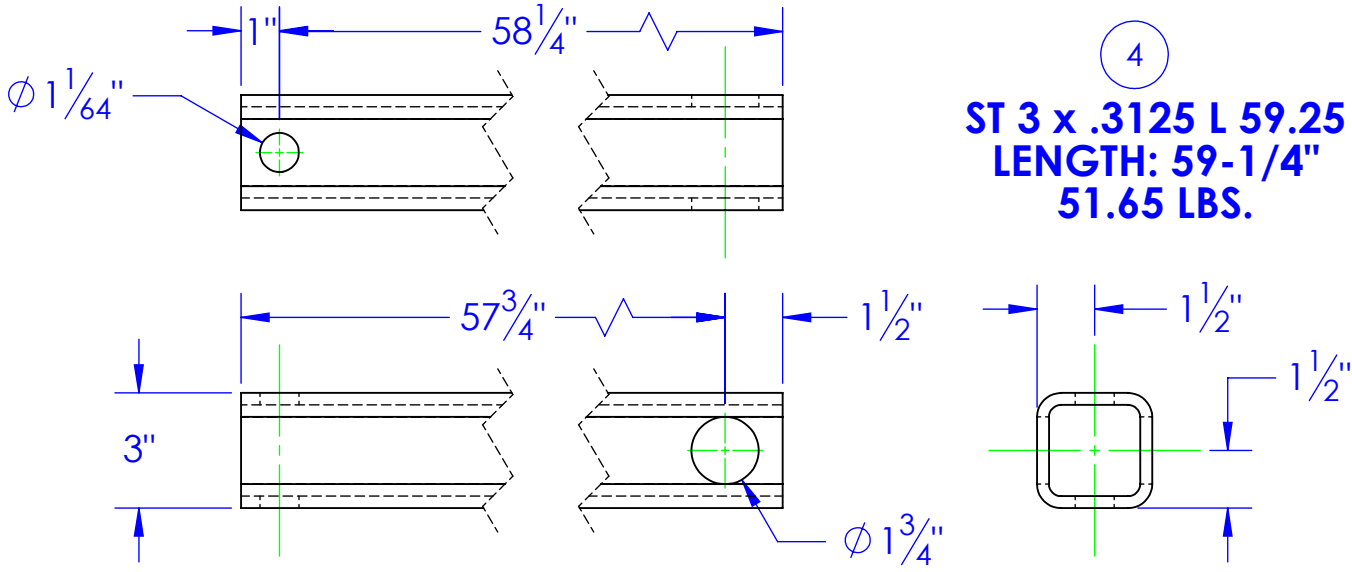


ITEM NO.	PART NUMBER	DESCRIPTION	DRAWING #	QTY.
1	FP-CLXO-100	CYLINDER LUG, ARM	10-1503	1
2	FP-SB00-100	00 SPINNER BUSHING	10-2500	1
3	HD-ZG .25-28 STR	GREASE ZERK 1/4-28 STRAIGHT	STOCK	1
4	ST 3 x .3125 L 59.25	LENGTH: 59-1/4"	70-1106	1

REV.	REVISIONS DESCRIPTION	DATE	APPROVED
B	UPDATED TO MATCH 3D MODEL	11/14/2012	



PROPRIETARY AND CONFIDENTIAL
THE INFORMATION CONTAINED IN THIS
DRAWING IS THE SOLE PROPERTY OF
<INSERT COMPANY NAME HERE>. ANY
REPRODUCTION IN PART OR AS A WHOLE
WITHOUT THE WRITTEN PERMISSION OF
<INSERT COMPANY NAME HERE> IS
PROHIBITED.

UNLESS OTHERWISE SPECIFIED:
DIMENSIONS ARE IN INCHES
TOLERANCES:
FRACTIONAL $\pm 1/16$
ANGULAR: MACH ± 1 BEND \pm
TWO PLACE DECIMAL ± 0.10
THREE PLACE DECIMAL ± 0.005
MATERIAL
DO NOT SCALE DRAWING

DRAWN	NAME	DATE	P.O. BOX 248, SABETHA KS. 66534 (785) 284-3674 FAX (785) 284-3931	
PART #	HEATH	11/14/2012	TRIPLE C INC.	
ASM #	SUB-TM2-5		SIZE B	REV B
COMMENTS: ARM, TM2000, WLDMT.			DWG. NO. 70-1106 B	
			SCALE: 1:5	WEIGHT: 54.04
				SHEET 1 OF 1